

20 April 2024

Contents

Pricewatch | 19 Jan 2021 | Gas Matters Today
Publication date: 19 January 2021

Gas Strategies Group

10 Saint Bride Street
London UK
EC4A 4AD

ISSN: 0964-8496

T: +44(0) 20 7332 9900
W: www.gasstrategies.com
Twitter @GasStrategies

Editorials

+44(0) 20 7332 9957
editor@gasstrategies.com

Subscriptions

+44(0) 20 7332 9976
subscriptions@gasstrategies.com



Pricewatch | 19 Jan 2021 | Gas Matters Today

Get the inside line. Take a free trial of Gas Strategies Information Services:

- Full access to Gas Matters, Gas Matters Today & LNG Business Review
- Access to our fully searchable archives containing
- Daily, weekly and monthly newsletters bringing the latest news and features to your inbox
- Gas Strategies iOS app

Free trial code **GS21**

Complimentary access

[1]

European gas prices fell for a fourth straight day on Monday, amid expectations of milder weather and increasing renewable power generation. Front-month UK NBP and Dutch TTF closed 7.7% and 6% lower respectively. The losses saw NBP return to the USD 7/MMBtu range for the first time since 7 January, with TTF returning to the USD 6/MMBtu range for the first time since the first week of the year.

Surging Covid-19 cases around the globe continued to weigh on crude prices, with front-month Brent and WTI both fall by 0.6% to start the week.

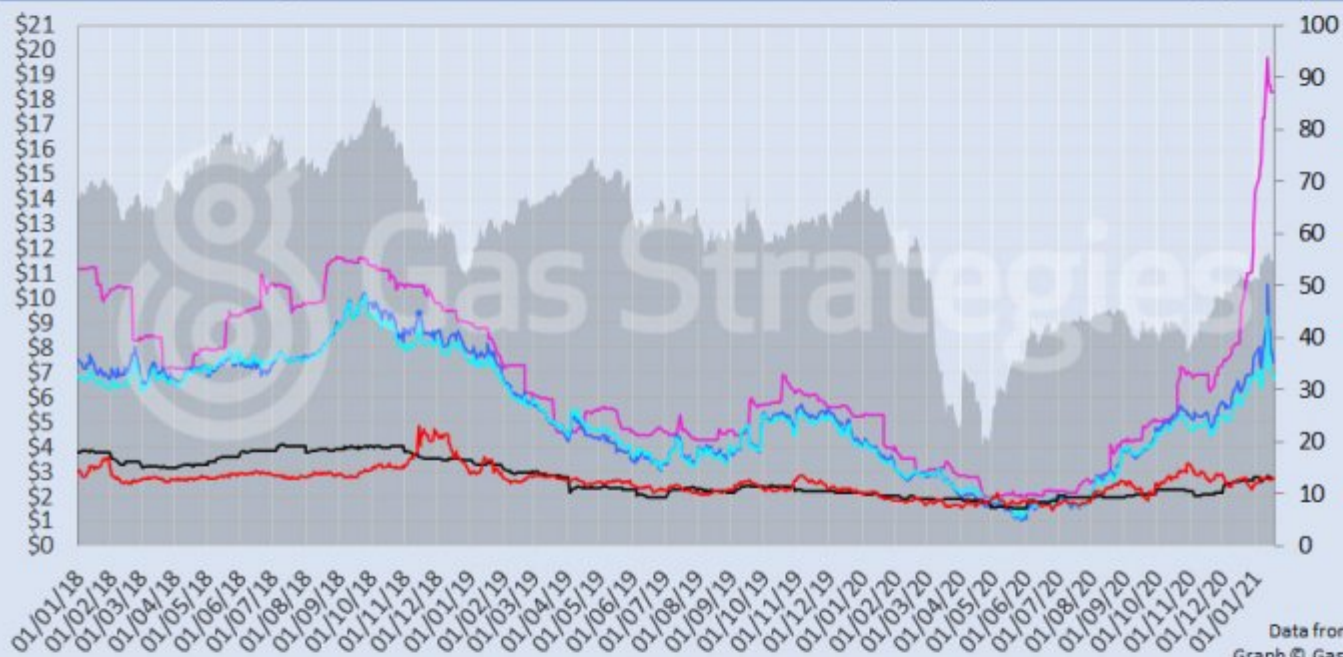
A public holiday in the US on Monday meant that the CME's month-ahead JKM, Henry Hub and AP12 coal contracts remained unchanged to start the week.

The European carbon price fell for a fourth day, recording a marginal loss of 0.3% on Monday.

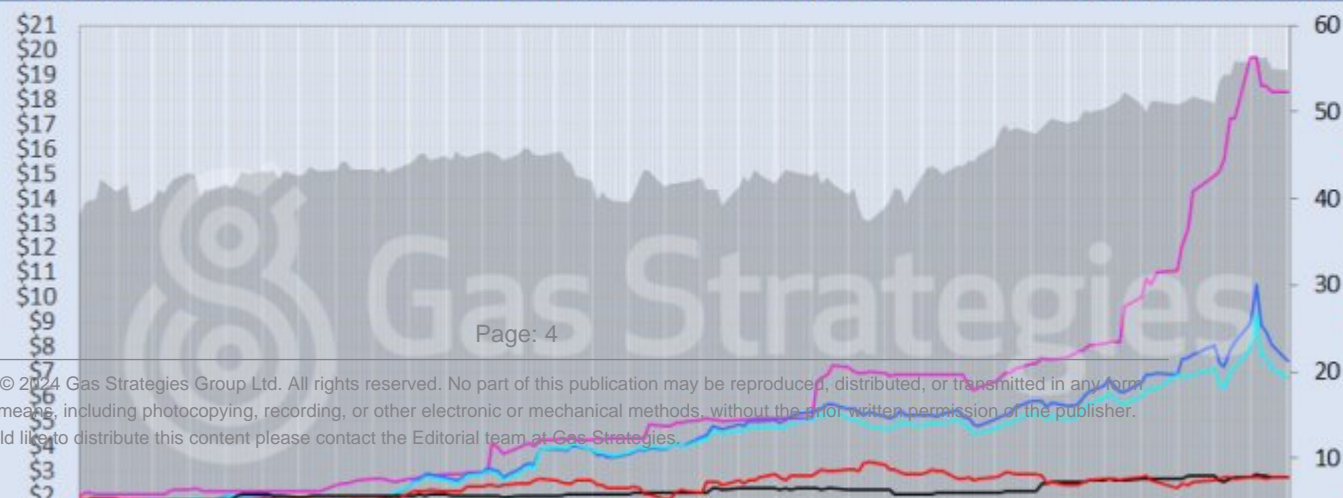
Front-month futures and indexes at last close with day-on-day changes (click to enlarge):

Front-month futures/index	18/01/2021	15/01/2021	Daily +/- (\$)	Daily
Henry Hub (\$/MMBtu)	2.74	2.74	0.00	
NBP (\$/MMBtu)	7.45	8.07	-0.62	
NBP (£p/th)	54.86	59.35	-4.49	
Henry Hub-NBP spread	4.71	5.33	-0.62	
TTF (\$/MMBtu)	6.74	7.16	-0.43	
TTF (€/MWh)	19.03	20.20	-1.17	
Henry Hub-TTF spread	4.00	4.42	-0.43	
JKM (\$/MMBtu)	18.31	18.31	0.00	
TTF-JKM spread	11.57	11.15	0.43	
Henry Hub-JKM spread	15.57	15.57	0.00	
Brent (\$/barrel)	54.75	55.10	-0.35	
WTI (\$/barrel)	52.05	52.36	-0.31	
Brent-WTI spread (\$/barrel)	2.70	2.74	-0.04	
API2 Coal (\$/tonne)	68.40	68.40	0.00	
API2 Coal (\$/MMBtu)	2.74	2.74	0.00	
EU CO ₂ emissions allowances (€/tonne)	31.53	31.64	-0.11	

US, UK and European gas hubs, Asian LNG, API2 coal front-month futures (left axis) and Brent crude (right axis), since 1 Jan 2018



US, UK and EU gas hubs, Asian LNG, API2 coal front-month futures (left axis) and Brent crude (right axis), since 1 Jan 2018



[2]

Time references based on London GMT. Brent, WTI, NBP, TTF and EU CO2 data from ICE. Henry Hub, JKM and API2 data from CME. Prices in USD/MMBtu based on exchange rates at last market close. All monetary values rounded to nearest whole cent/penny. Text and graphic copyright © Gas Strategies, all rights reserved.



Consulting

+44 (0) 20 7332 9900
consult@gasstrategies.com



Alphatania Training

+44 (0) 20 7332 9910
training@gasstrategies.com



Information Services

+44 (0) 20 7332 9976
subscriptions@gasstrategies.com

Copyright © 2024 Gas StrategiesGroup Ltd.

Gas Strategies Group Limited is a company registered in England and Wales under company number 2225820.

Gas Strategies is the trading name of Gas Strategies Group Limited.

Registered company address: 10 St Bride Street, London, EC4A 4AD