

8 May 2024

## Contents

Pricewatch | 9 Oct 2020 | Gas Matters Today  
Publication date: 09 October 2020

### Gas Strategies Group

10 Saint Bride Street  
London UK  
EC4A 4AD

ISSN: 0964-8496

T: +44(0) 20 7332 9900  
W: [www.gasstrategies.com](http://www.gasstrategies.com)  
Twitter @GasStrategies

### Editorials

+44(0) 20 7332 9957  
[editor@gasstrategies.com](mailto:editor@gasstrategies.com)

### Subscriptions

+44(0) 20 7332 9976  
[subscriptions@gasstrategies.com](mailto:subscriptions@gasstrategies.com)



# Pricewatch | 9 Oct 2020 | Gas Matters Today

**Get the inside line. Take a free trial of Gas Strategies Information Services:**

- Full access to Gas Matters, Gas Matters Today & LNG Business Review
- Access to our fully searchable archives containing
- Daily, weekly and monthly newsletters bringing the latest news and features to your inbox
- Gas Strategies iOS app

Free trial code **GS20**

**Complimentary access**

[1]

Crude oil prices jumped on Thursday on news of a potential prolonged outage on some of Equinor's Norwegian platforms due to industrial action, combined with Gulf of Mexico shut-ins ahead of the arrival of Hurricane Delta. Brent closed yesterday up 3.2% at USD 43.34/barrel and WTI gained 3.1% to USD 41.19/barrel. Both month-ahead contracts were trading down marginally on Friday morning.

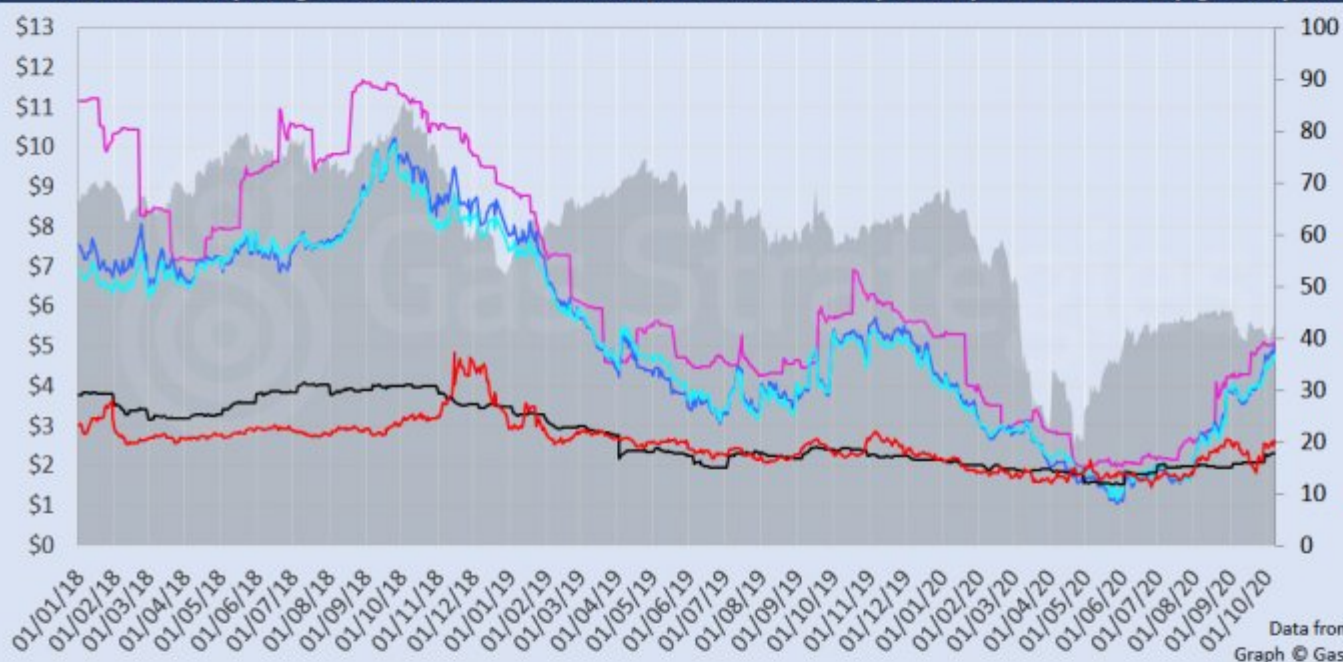
US gas benchmark Henry Hub fell 0.8% to USD 2.63/MMBtu. European hubs NBP and TTF gained 0.3% and 1.4% to close at the equivalent of USD 5.01/MMBtu and USD 4.79/MMBtu, respectively. CME's November-dated JKM futures contract rose 0.4% to USD 5.11/MMBtu.

The European carbon price relinquished recent gains, as month-ahead ETS allowance (EUA) futures fell 2.1% to close at EUR 26.33/tonne.

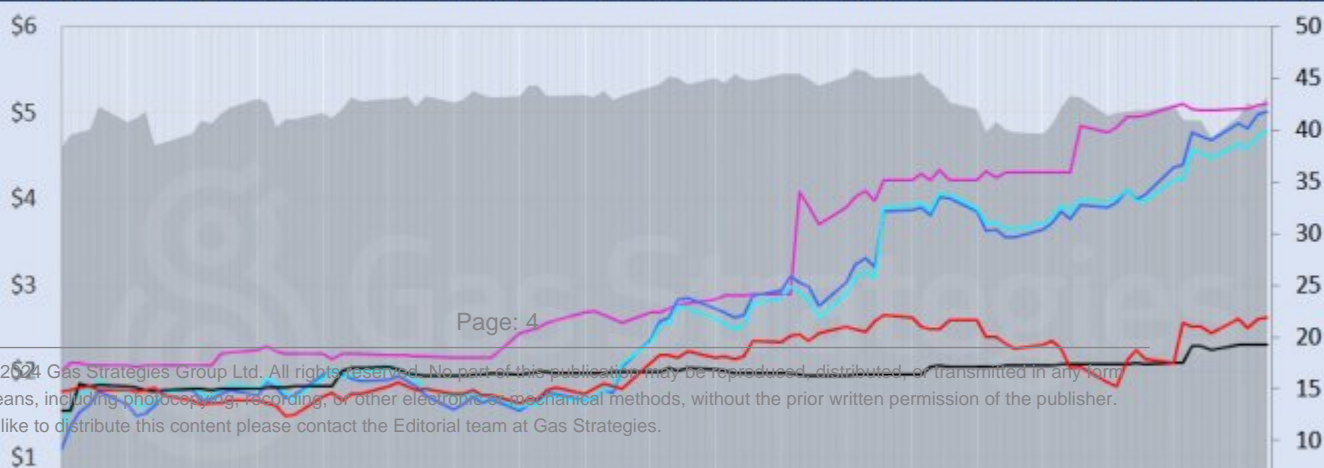
*Front-month futures and indexes at last close with day-on-day changes (click to enlarge):*

Front-month futures/index	08/10/2020	07/10/2020	Daily +/- (\$)	Daily
Henry Hub (\$/MMBtu)	2.63	2.61	0.02	
NBP (\$/MMBtu)	5.01	4.98	0.03	
NBP (£p/th)	38.70	38.59	0.11	
Henry Hub-NBP spread	2.38	2.38	0.01	
TTF (\$/MMBtu)	4.79	4.73	0.06	
TTF (€/MWh)	13.90	13.71	0.19	
Henry Hub-TTF spread	2.16	2.12	0.04	
JKM (\$/MMBtu)	5.11	5.09	0.02	
TTF-JKM spread	0.32	0.36	-0.04	
Henry Hub-JKM spread	2.48	2.48	0.00	
Brent (\$/barrel)	43.34	41.99	1.35	
WTI (\$/barrel)	41.19	39.95	1.24	
Brent-WTI spread (\$/barrel)	2.15	2.04	0.11	
API2 Coal (\$/tonne)	57.70	57.65	0.05	
API2 Coal (\$/MMBtu)	2.31	2.31	0.00	
EU CO <sub>2</sub> emissions allowances (€/tonne)	26.33	26.89	-0.56	

US, UK and European gas hubs, Asian LNG, API2 coal front-month futures (left axis) and Brent crude (right axis), since 1 Jun



US, UK and EU gas hubs, Asian LNG, API2 coal front-month futures (left axis) and Brent crude (right axis), since 1 Jun



[2]

*Time references based on London GMT. Brent, WTI, NBP, TTF and EU CO2 data from ICE. Henry Hub, JKM and API2 data from CME. Prices in USD/MMBtu based on exchange rates at last market close. All monetary values rounded to nearest whole cent/penny. Text and graphic copyright © Gas Strategies, all rights reserved.*



### **Consulting**

+44 (0) 20 7332 9900  
[consult@gasstrategies.com](mailto:consult@gasstrategies.com)



### **Alphatania Training**

+44 (0) 20 7332 9910  
[training@gasstrategies.com](mailto:training@gasstrategies.com)



### **Information Services**

+44 (0) 20 7332 9976  
[subscriptions@gasstrategies.com](mailto:subscriptions@gasstrategies.com)